

# VULNERABLE ROADWAY USERS (VRU)

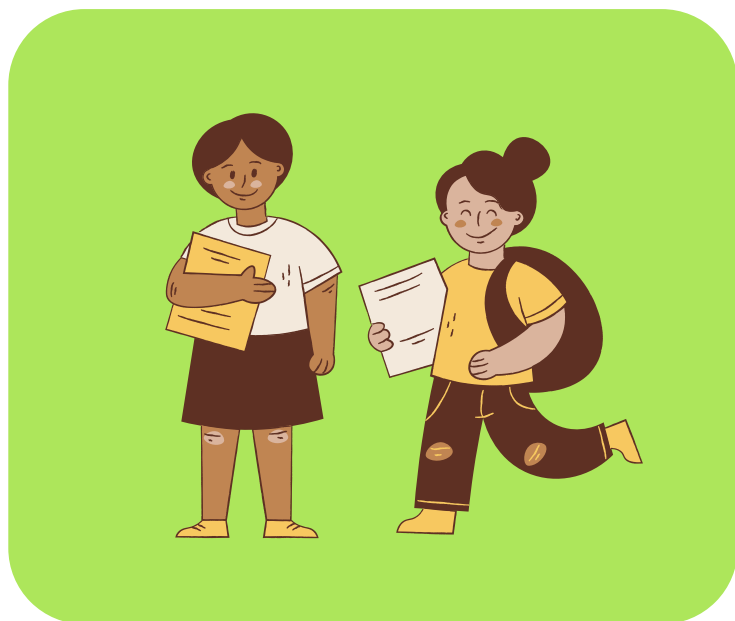
Vulnerable roadway users include motorcyclists, pedestrians, cyclists, and other nonoccupants.  
(National Highway Traffic Safety Administration)

## WHY VULNERABLE?

VRU's are people at the highest risk for fatalities in traffic crashes. Motorcyclists, pedestrians, cyclists, and other nonoccupants are subject to outdoor elements that may increase susceptibility to harmful events in traffic crashes. Nonoccupants include, but are not limited to, wheelchairs, riders or occupants of other transport vehicles, such as all-terrain vehicles and tractors (National Highway Traffic Safety Administration).



According to the CDC, bicycle helmets are the single most effective tool available to reduce head injuries and fatalities resulting from bicycle crashes.



### Motorcyclist

Motorcyclist were involved in 1.1% of all traffic crashes in Michigan in 2022 which resulted in 173 were killed and 2,466 were injured.



### Pedestrian

Of the 2,026 pedestrians involved in crashes, in 2022, 173 were killed and 1,566 were injured in 2022.



### Cyclist

There were 1,351 bicyclists involved in motor vehicle crashes in Michigan in 2022.



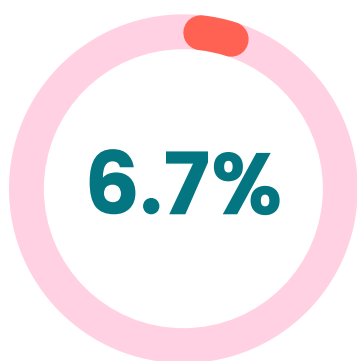
### Nonoccupants

The National Road Safety Strategy states users of mobility devices and children under 7 years old have little to no protection from crash forces.

-Michigan Traffic Crash Facts

# 7,508

The Govenors Highway Safety Association estimates at least 7,508 pedestrians were killed nationally in traffic crashes in 2022.



A total of 490,218 licensed drivers, in 2022, were aged 15-20 and represented 6.7% of Michigan's driving population. Among those drivers, 49,361 were involved in crashes resulting in 130 fatal crashes (Michigan Traffic Crash Facts).

